

LAND USE COMMITTEE MEETING

JUNE 18, 2019

**RECORD MAJOR LAND DEVELOPMENT
PLAN
COUNTRY HOUSE COTTAGES**

APPLICATION NO. 2016-0375-S

**SAUL EWING
ARNSTEIN
& LEHR^{LLP}**





Where Loving-Kindness Lives

Directions

FROM I-95

Take exit 7B (RT 52 and Delaware Avenue.)
Make a right turn at the light and stay left to merge onto 52 North.
Travel 4.2 miles. At the light .5 miles past Kirk Road turn left
into the entry for Country House.

FROM 202

Turn onto RT 1 South. At RT 52 South take a left hand turn.
Travel 5.5 miles. Country House will be on your right .6 miles
past the light at Winterthur and directly across from
Wilmington Country Club.



Country House

4830 KENNETT PIKE
WILMINGTON, DE 19807

855-976-3304

VISITACTS.COM/COUNTRYHOUSE



Acts is a not-for-profit organization pledged to the letter and spirit of U.S. policy for the achievement of equal housing opportunity throughout the nation. We encourage and support programs in which there are no barriers to obtaining housing because of race, color, religion, sex, handicap, familial status or national origin. All communities are CARF accredited.



BPCH 4/2019



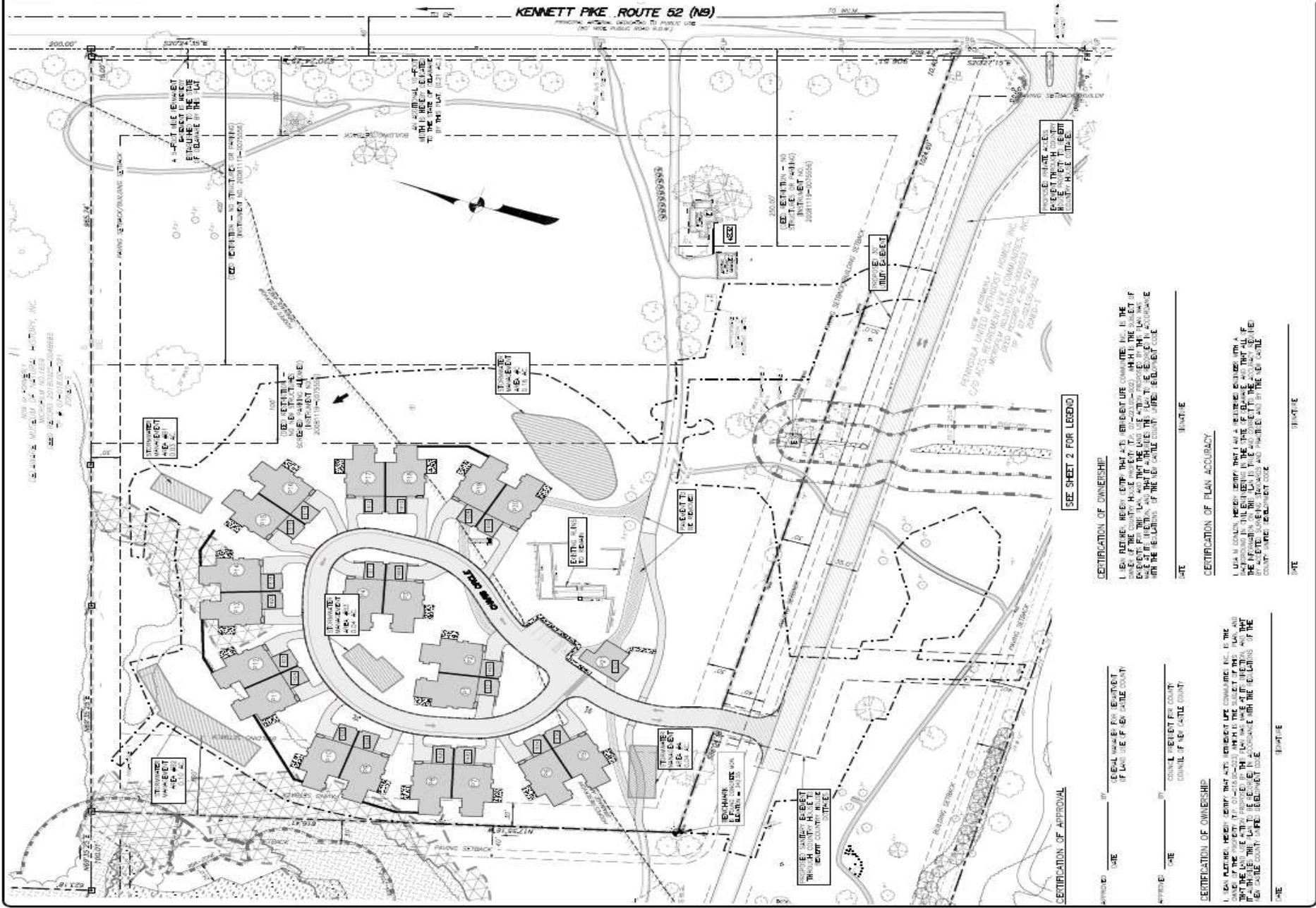
Campus Site Plan

This plan is an artistic rendering. Actual location of carriage homes, infrastructure, and landscaping are subject to change.



Cottage Site Plan

This plan is an artistic rendering. Actual location of carriage homes, infrastructure, and landscaping are subject to change.



KENNETT PIKE, ROUTE 52 (NB)
PERSONAL OFFICIAL, SUBJECT TO PUBLIC USE
 FOR THE PUBLIC ROAD EASEMENT

CERTIFICATION OF APPROVAL

APPROVED: _____ BY _____
 DATE _____
 (SEAL SPACE FOR EASEMENT
 IF LAND IS OF BENJAMIN COUNTY)
 APPROVED: _____ BY _____
 DATE _____
 (SEAL SPACE FOR COUNTY
 COUNCIL OF BENJAMIN COUNTY)

SEE SHEET 2 FOR LEGEND

CERTIFICATION OF OWNERSHIP

I, LEAN RUTHER, HEREBY CERTIFY THAT ALL EASEMENTS COMPAKED ARE IN THE
 HANDS OF THE COUNTY, HAVE BEEN SET UP TO THE SATISFACTION OF THE COUNTY AND
 THAT THE EASEMENTS ARE IN FULL FORCE AND EFFECT AND THAT ALL EASEMENTS
 HAVE BEEN SET UP TO THE SATISFACTION OF THE COUNTY AND THAT ALL EASEMENTS
 ARE IN FULL FORCE AND EFFECT AND THAT ALL EASEMENTS ARE IN FULL FORCE AND EFFECT
 WITH THE RECORDS OF THE BENJAMIN COUNTY OFFICE, EASEMENT CODE

DATE _____
 SIGNATURE _____

CERTIFICATION OF PLAN ACCURACY

I, LEAN RUTHER, HEREBY CERTIFY THAT I AM A LICENSED SURVEYOR WITH A
 LICENSE IN THE STATE OF MISSOURI AND THAT I AM THE SURVEYOR OF THIS PLAN AND
 THAT I HAVE BEEN ADVISED BY THE LANDOWNER THAT ALL EASEMENTS
 ARE IN FULL FORCE AND EFFECT AND THAT ALL EASEMENTS ARE IN FULL FORCE AND EFFECT
 WITH THE RECORDS OF THE BENJAMIN COUNTY OFFICE, EASEMENT CODE

DATE _____
 SIGNATURE _____

CERTIFICATION OF APPROVAL

APPROVED: _____ BY _____
 DATE _____
 (SEAL SPACE FOR EASEMENT
 IF LAND IS OF BENJAMIN COUNTY)
 APPROVED: _____ BY _____
 DATE _____
 (SEAL SPACE FOR COUNTY
 COUNCIL OF BENJAMIN COUNTY)

CERTIFICATION OF OWNERSHIP

I, LEAN RUTHER, HEREBY CERTIFY THAT ALL EASEMENTS COMPAKED ARE IN THE
 HANDS OF THE COUNTY, HAVE BEEN SET UP TO THE SATISFACTION OF THE COUNTY AND
 THAT THE EASEMENTS ARE IN FULL FORCE AND EFFECT AND THAT ALL EASEMENTS
 HAVE BEEN SET UP TO THE SATISFACTION OF THE COUNTY AND THAT ALL EASEMENTS
 ARE IN FULL FORCE AND EFFECT AND THAT ALL EASEMENTS ARE IN FULL FORCE AND EFFECT
 WITH THE RECORDS OF THE BENJAMIN COUNTY OFFICE, EASEMENT CODE

DATE _____
 SIGNATURE _____

COTTAGES



Country House

Where Loving-Kindness Lives



The Centreville

rlps architects

ACTS Retirement-Life Communities

