

New Castle County
Level of Service (LOS) Summit
October 18, 2017



**NEW CASTLE COUNTY
DEPARTMENT OF LAND USE**

Agenda



- Welcome
- Land Use General Manager opening remarks
- Introduction of panel members
- Mark White presentation
- Questions to panel members
- “Poll Everywhere” survey
- Closing remarks

Richard E. Hall, AICP Land Use Department General Manager



- **What is the purpose of today's LOS Summit?**
 - Gain an understanding of LOS
 - Is LOS an appropriate traffic impact management approach?
 - Intended and unintended consequences
 - LOS and the transportation network

Panel Members



- Dan Blevins - WILMAPCO
- Tom Dewson - Greenville area civic leader
- Lee Jarmon - Rt. 9 area civic leader
- Nicole Majeski - DelDOT
- Paul Morrill - Committee of 100
- Mike Riemann - American Council of Engineering Companies (ACEC)
- Mark White - White & Smith, LLC - UDC update consultant and author of the “Level of Service White Paper”.

LOS Policy Issues



Where does concurrency apply?

What facilities do we consider?

What is the LOS standard?

What is current and planned capacity?

How does it apply to types of developments / land uses?

To what types of approvals does concurrency apply?

At what stage of the process is concurrency evaluated?

What happens when development does not meet the LOS standard?

What conditions or mitigation requirements apply?

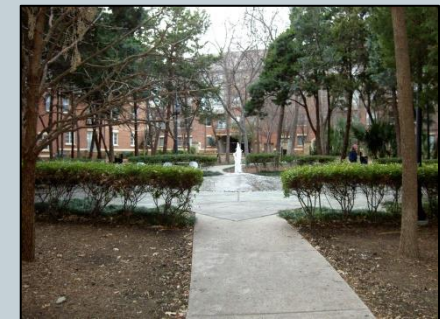
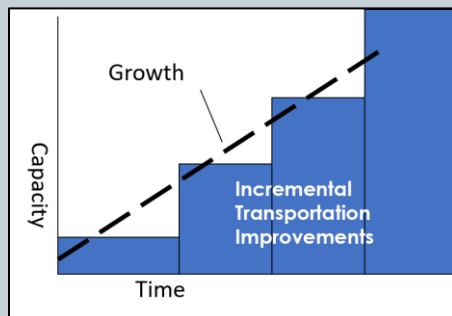
How do we reserve capacity?

LOS Purposes and Issues



- Quality of life
- Control timing & volume of traffic impacts
- Predictable standard
- Flexibility
- Planning
- Priorities

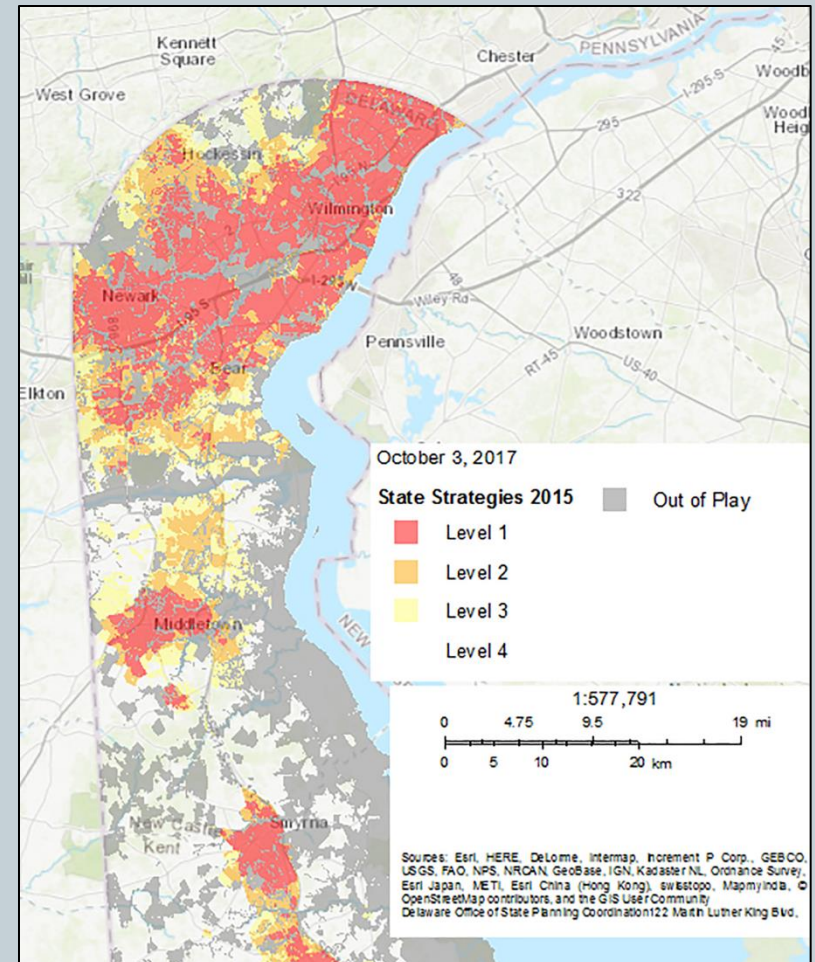
- Countywide / regional development patterns
- Administration
- Supply & cost of housing
- Economic development / redevelopment
- Measurement



What are our options / best practices?



- Transportation improvement districts (TIDs)
- Adjust by area (e.g., what is “infill”)?
- Coordinate with workforce housing
- Coordinate with economic development / redevelopment
- Quantify internal capture
- Quantify capacity / modal split



Question #1



- What is the purpose served by traffic concurrency and what is the most important unintended consequence?

Question #2



- To what degree do the requirements address transportation issues beyond the individual project scale?

Question #3



- Does LOS make smart growth harder and therefore result in more greenfield growth? How and where should LOS standards be set – should they vary by location or type of development?

Question #4



- What recommendations would you suggest regarding future application of LOS standards?
 - A. No change
 - B. Modest changes, such as increase time from 55 seconds, establish peak hour %, remove left turn evaluation
 - C. Give consideration to job producers, revitalization, medical facilities
 - D. Other

Poll Everywhere



- Network – **Library-Public**
- Two “warm up” questions
- 8 LOS questions

Closing Remarks



- Summary will be posted on the Land Use website
- Stay tuned as we consider our next steps
- We appreciate your participation--thank you for attending the LOS Summit.

Thank You