

New Castle County FY 2011 Revenue

As of October 31, 2010

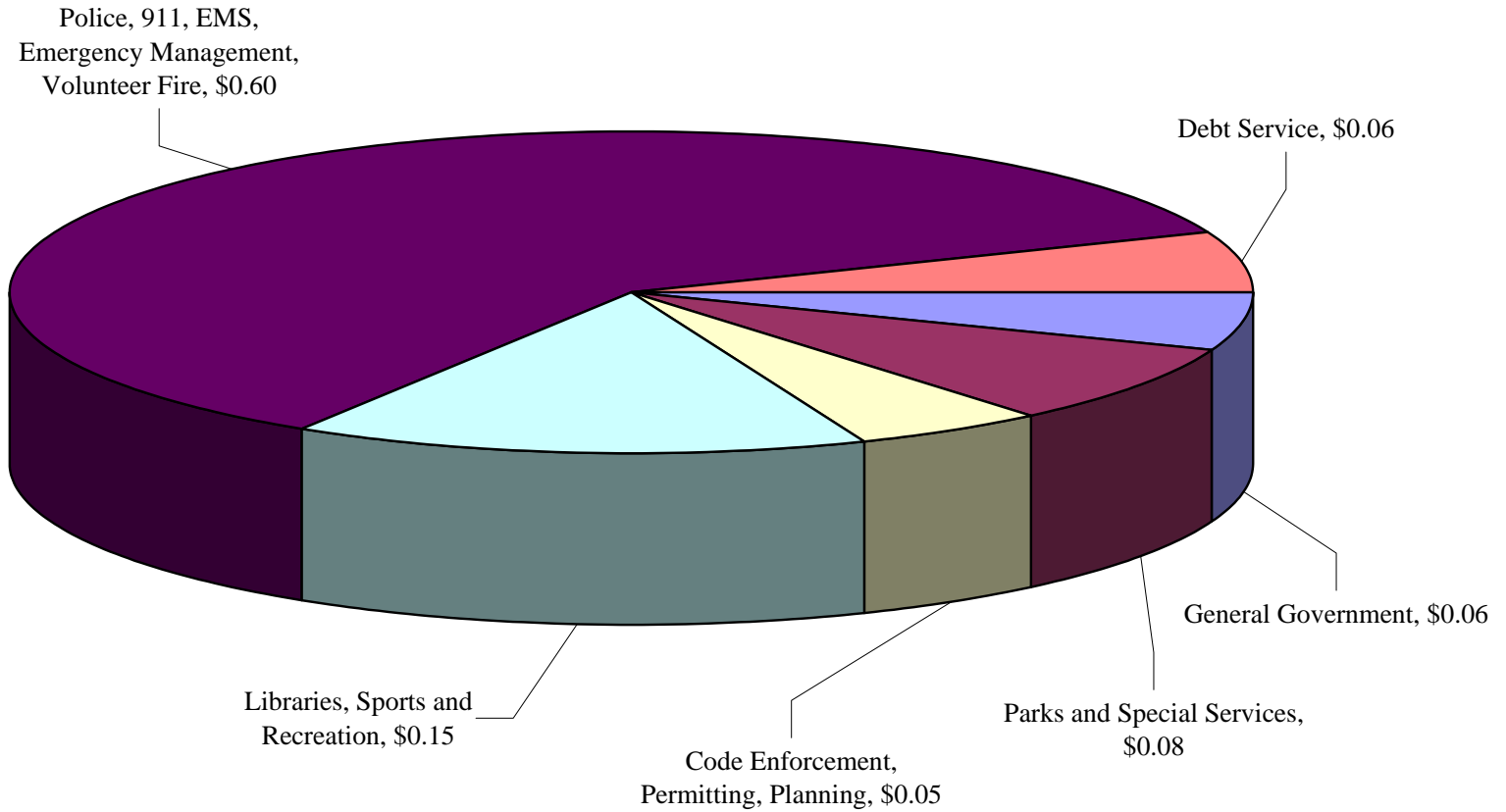
Submitted by the Office of Finance
November 9, 2010

Property Tax collected

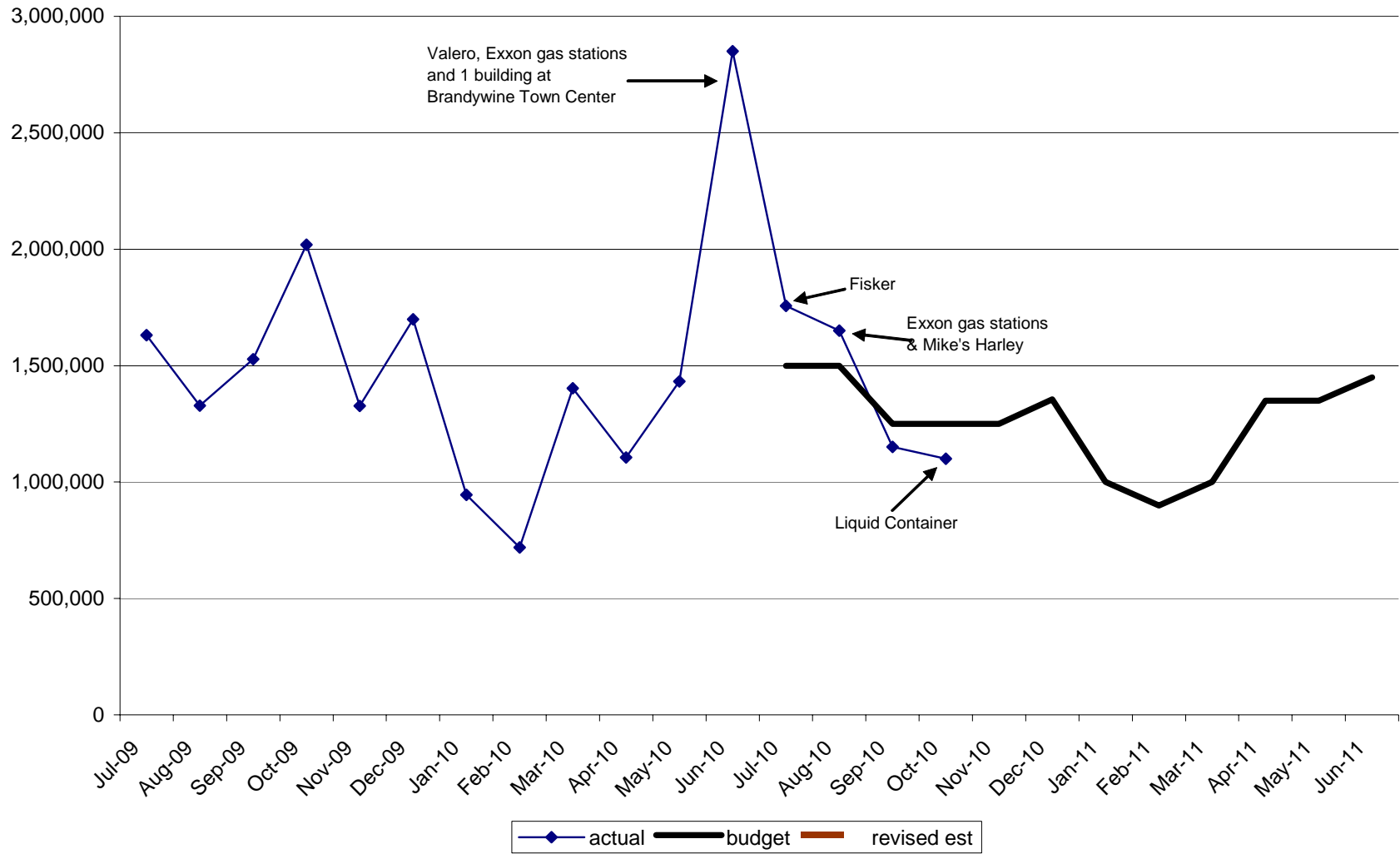
July 1st to October 31st

	Initial Billing	Amount Collected	Percentage
FY 2011	\$107,519,887	\$103,706,506	96.45%
FY 2010	\$107,089,847	\$103,363,937	96.52%
FY 2009	\$84,614,084	\$82,018,401	96.93%

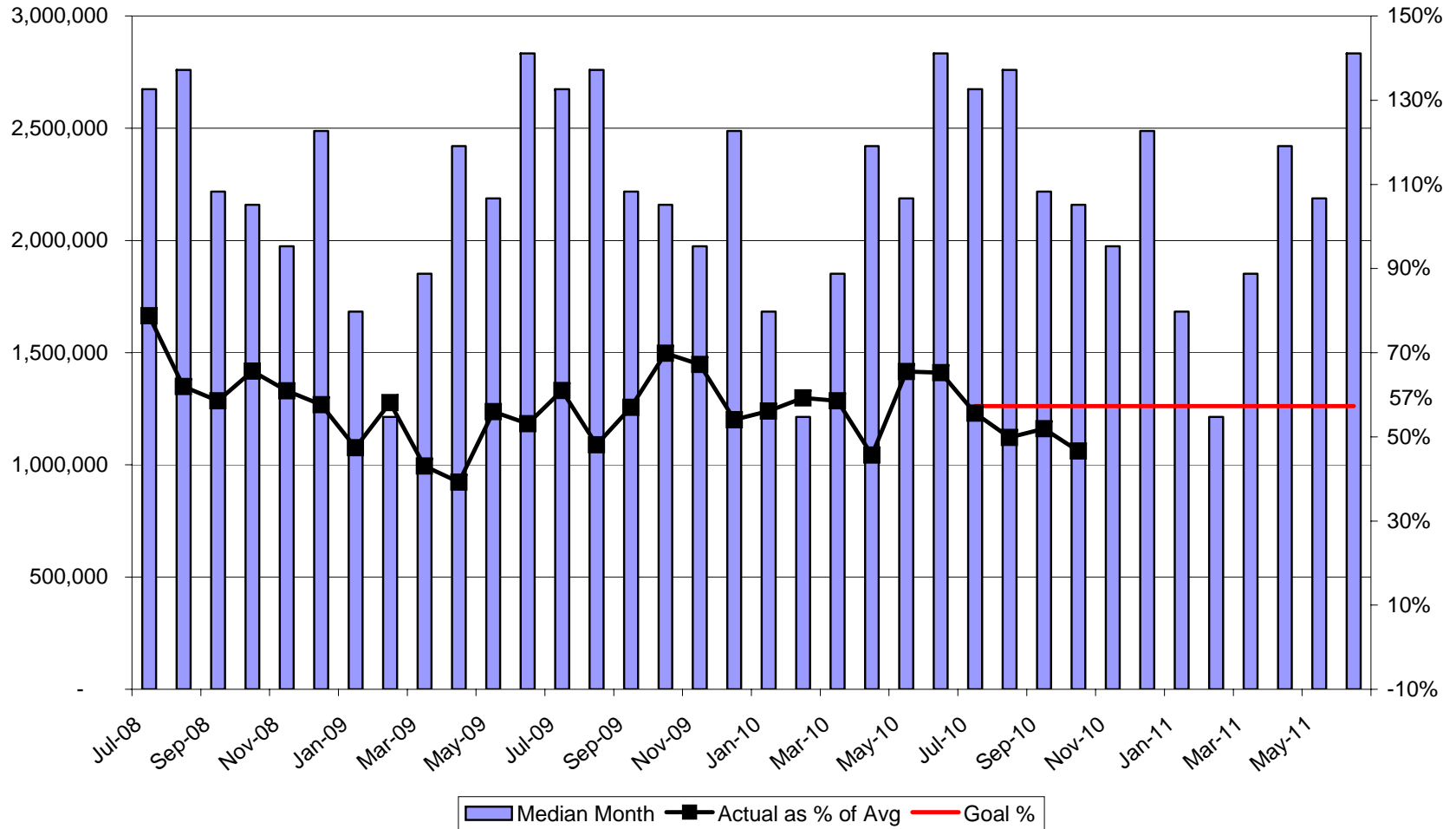
County Tax Dollar Breakdown FY2011 Approved



RTT Revenue



RTT
Actual Collected as % of Median Month
Excludes Sales Over \$5 Million



Over \$5 Million Transactions RTT Received by NCC

Fisker	\$270,000
Exxon Gas Stations	153,000
Mike's Harley	120,000
Liquid Container	93,000
	<hr/>
	\$906,000

RTT thru October 31st

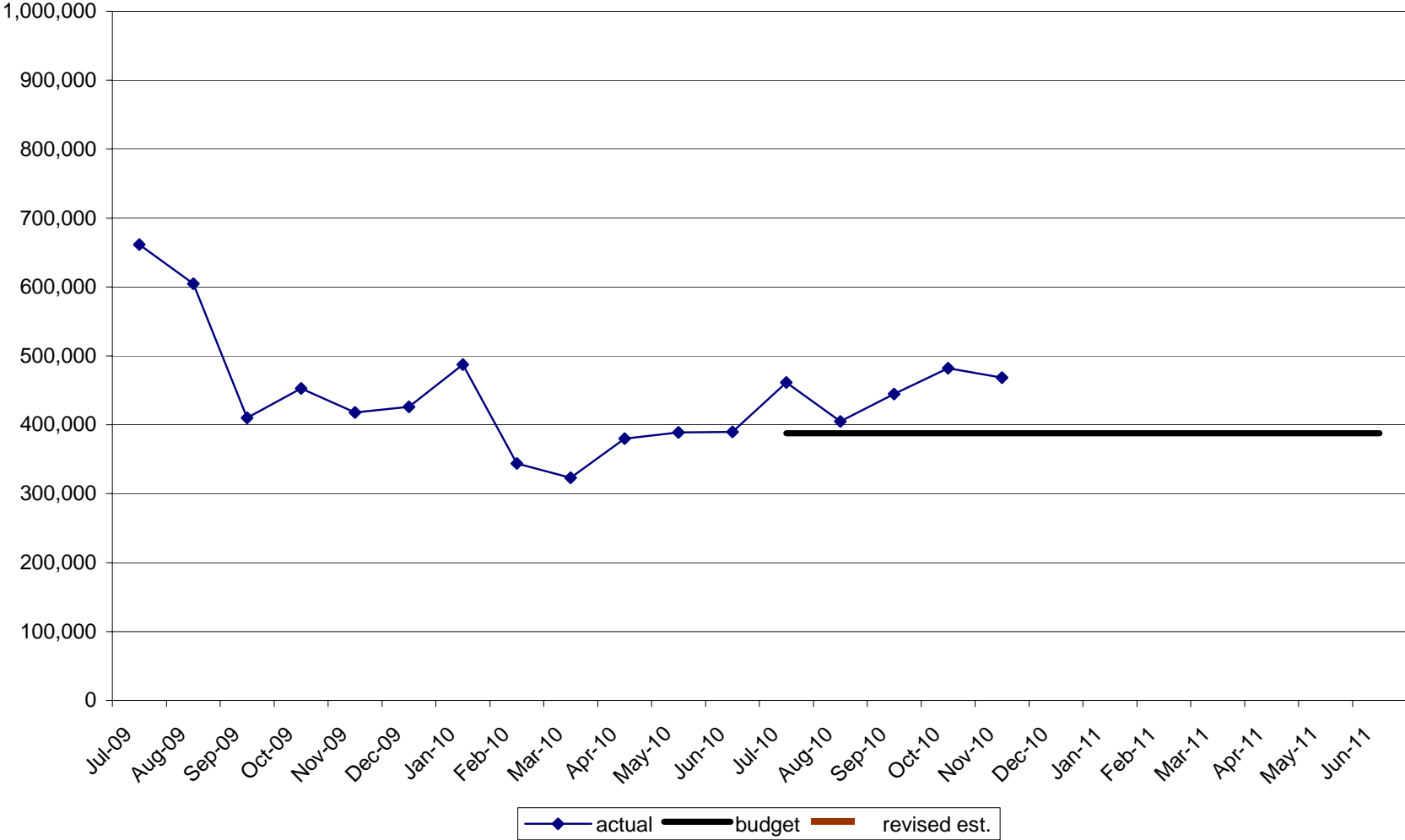
First Time Homebuyer Transactions

FY 2010	FY 2011	% Change
809	345	-57.35%

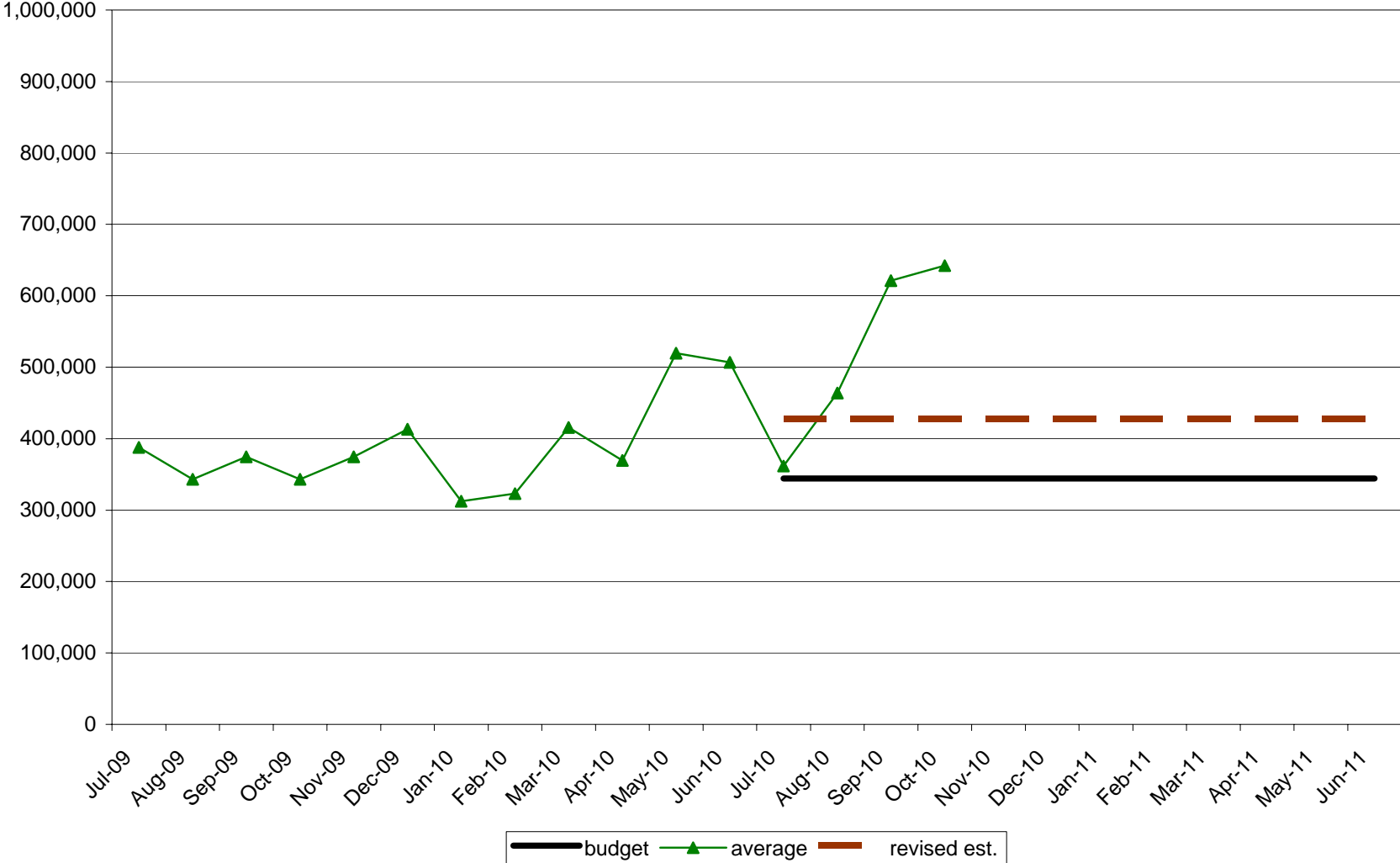
Total of all RTT Transactions

FY 2010	FY 2011	% Change
1,768	1,269	-28.22%

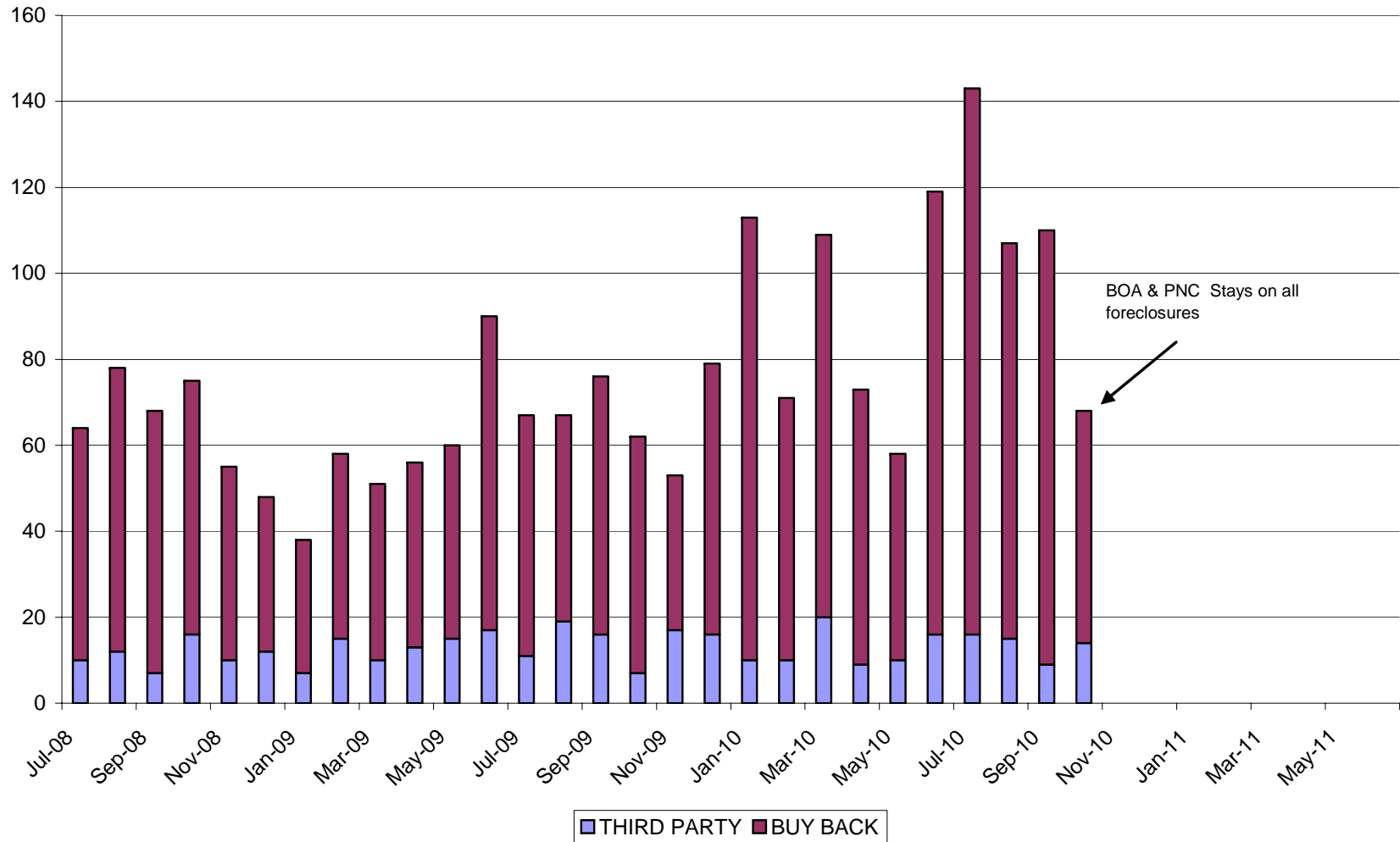
**Recorder of Deeds Revenue
No Corporation Fees**



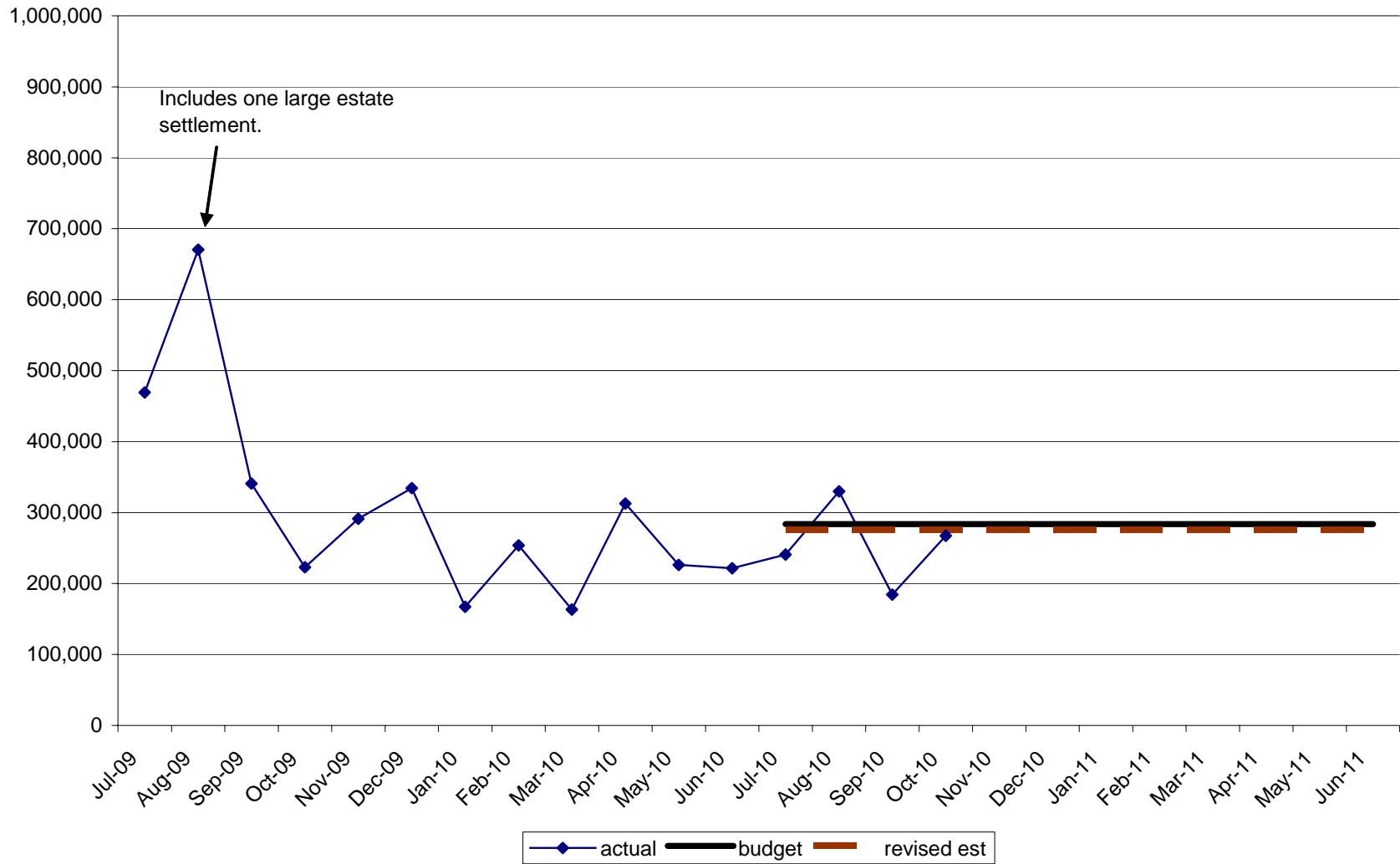
Sheriff Revenue



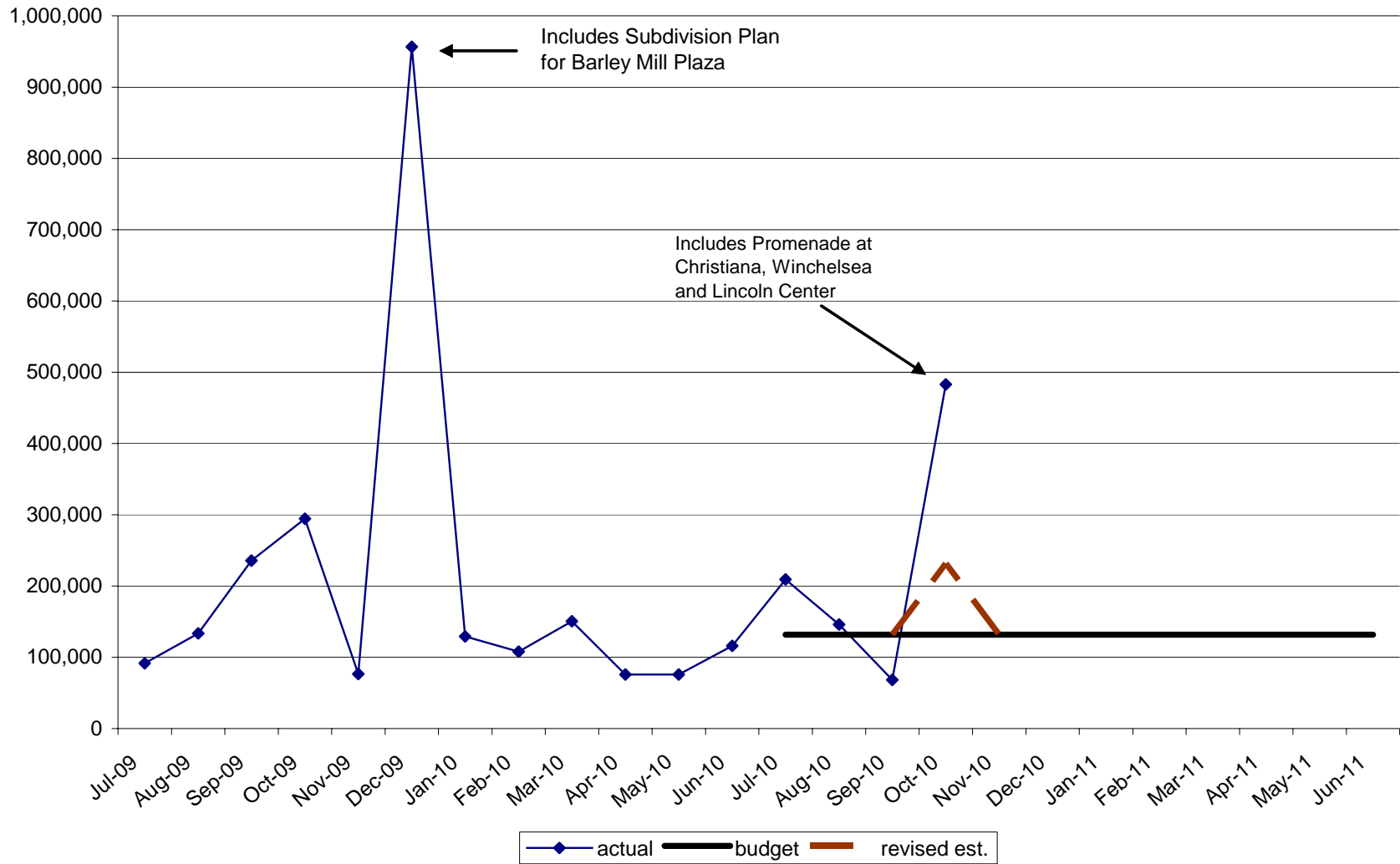
Number of Sheriff Sales FY 2009 to FY 2011



Register of Wills Revenue



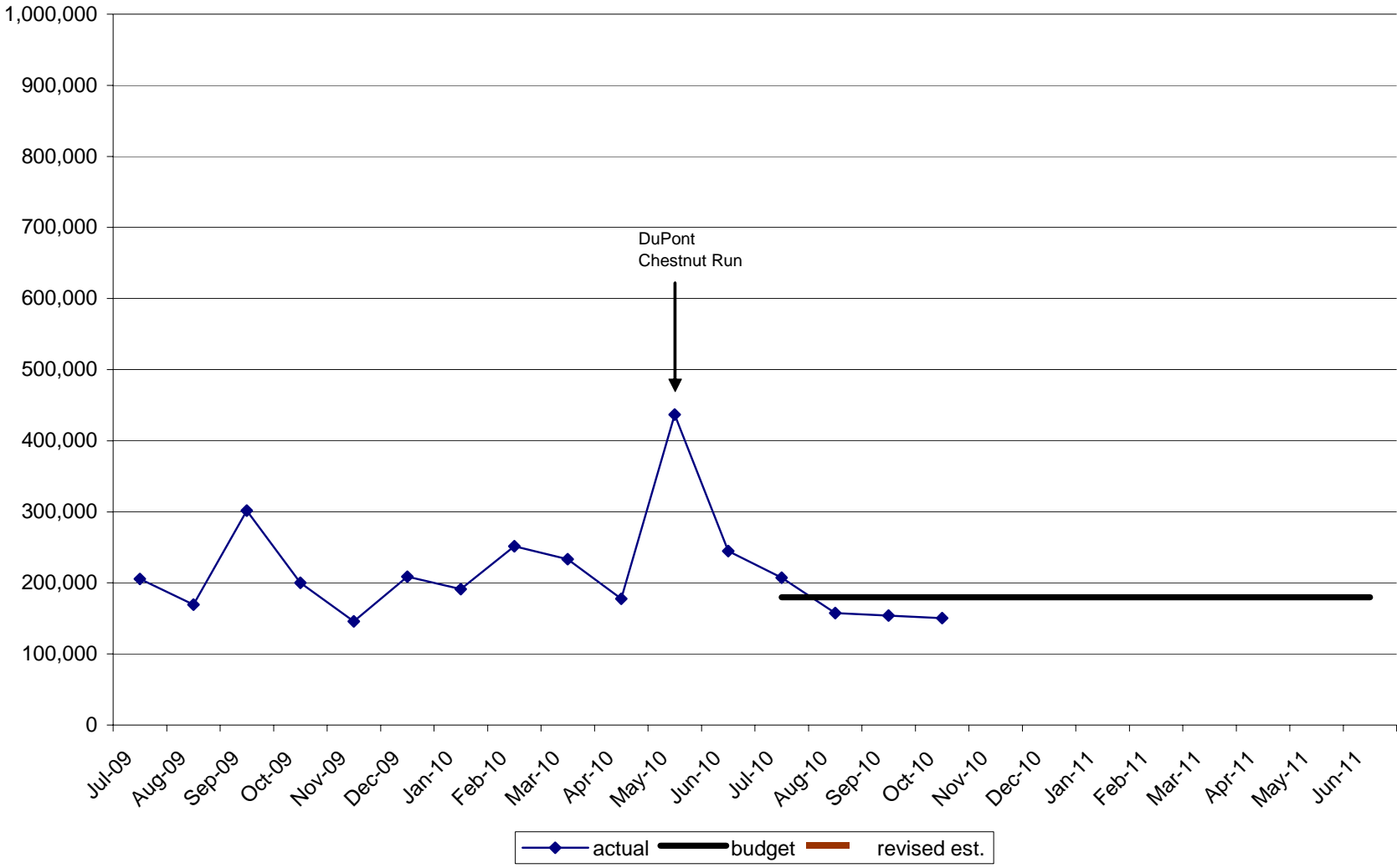
Subdivision & Zoning Review Revenue



Large Subdivision Review Projects

Lincoln Center	\$161,000
Winchelsea	107,000
Preserve at Robinson Farm	100,000
Promenade at Christiana	94,000
	<hr/>
	\$462,000

Building Permit Revenue



FY 2011 Major Commercial Building Permits

Summit Aviation	22,000
Word of Life Church	21,000
	<hr/>
	\$43,000

Non Residential Sewer Charges

